

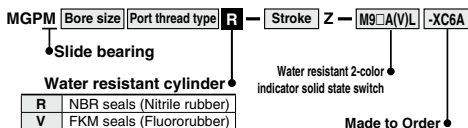
Air Cylinders

Compact guide cylinder

MGP Series $\phi 20$ to $\phi 100$



How to Order



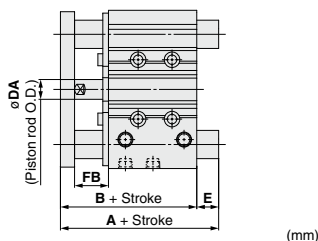
* Piston rod and guide rod are made of stainless steel.

Specifications

| | | | |
|----------------------------|---------------------------------|---|--|
| Applicable series | MGPM | | |
| Bearing type | Slide bearing | | |
| Bore size (mm) | 20, 25, 32, 40, 50, 63, 80, 100 | | |
| Cushion | MGPM□□R | Rubber bumper | |
| | MGPM□□V | Without cushion | |
| Auto switch mounting | Direct mounting | | |
| Minimum operating pressure | 0.13 MPa | | |
| Made to Order | -XC6A | Specified parts made of stainless steel | |

* Specifications other than above are the same as standard, basic type. (Note) Refer to the **Web Catalog** for details.

Dimensions



| Bore size (mm) | A | | | B | DA |
|----------------|---------------|--------------------|-------------|-------|------|
| | 50 st or less | Over 50 st or less | Over 200 st | | |
| 20 | 66 | 90.5 | 123 | 66 | (10) |
| 25 | 67.5 | 91.5 | 123.5 | 67.5 | (10) |
| 32 | 87 | 105.5 | 141.5 | 71.5 | (14) |
| 40 | 87 | 105.5 | 141.5 | 78 | (14) |
| 50 | 99.5 | 120.5 | 161.5 | 83 | 20 |
| 63 | 99.5 | 120.5 | 161.5 | 88 | 20 |
| 80 | 110.5 | 137.5 | 186.5 | 102.5 | 25 |
| 100 | 130.5 | 155.5 | 194.5 | 120 | 30 |

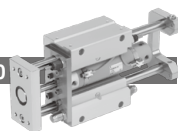
| Bore size (mm) | E | | | FB | XC6A | |
|----------------|---------------|--------------------|-------------|----|------|----|
| | 50 st or less | Over 50 st or less | Over 200 st | | FB | FB |
| 20 | (0) | (24.5) | (57) | 21 | 20 | |
| 25 | (0) | (24) | (56) | 21 | 20 | |
| 32 | (15.5) | (34) | (70) | 24 | 22 | |
| 40 | (9) | (27.5) | (63.5) | 24 | 22 | |
| 50 | (16.5) | (37.5) | (78.5) | 27 | 23 | |
| 63 | (11.5) | (32.5) | (73.5) | 27 | 23 | |
| 80 | (8) | (35) | (84) | 30 | 27 | |
| 100 | (10.5) | (35.5) | (74.5) | 35 | 32 | |

* The dimensions in () are the same as standard type.

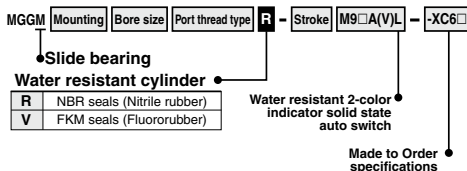
* The FB dimensions change for the XC6A.

Guide cylinder

MGG Series $\phi 32$ to $\phi 100$



How to Order



* A scraper is installed on piston rod parts only.

Specifications

| | | |
|----------------------|---|---|
| Action | Double acting | |
| Bore size (mm) | 32, 40, 50, 63, 80, 100 | |
| Bearing type | Slide bearing | |
| Cushion | Built-in rubber bumper and shock absorber | |
| Auto switch mounting | Band mounting | |
| Made to Order | -XC6 | Made of stainless steel (Piston rod, rod end nut) |
| | -XC6A | Stainless steel used on all iron parts |
| | -XC6B | Stainless steel rod end moving parts |
| | -XC6C | Stainless steel rods |

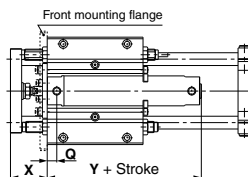
* Specifications other than above are the same as standard, basic type. Refer to the **Web Catalog** for details.

(Note) RBL (anti-coolant) type is used for shock absorbers.

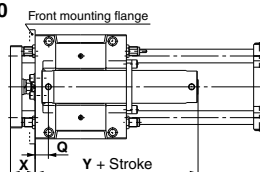
Dimensions

(Dimensions other than the below are the same as the standard type.)

$\phi 32$ to $\phi 50$



$\phi 63$ to $\phi 100$



| Bore size (mm) | Q | X | Y |
|----------------|----|----|-----------|
| 32 | 16 | 48 | 77 (85) |
| 40 | 17 | 58 | 84 (93) |
| 50 | 19 | 69 | 97 (109) |
| 63 | 34 | 56 | 112 (124) |
| 80 | 46 | 68 | 137 (151) |
| 100 | 47 | 68 | 138 (152) |

* (): For the long stroke type.